

NEW SEISMIC ANALYSIS CONFIRMS REGIONAL SCALE & PROSPECTIVITY OF TARCOOLA PROJECT

HIGHLIGHTS

- Completion of 2D seismic analysis by leading international seismic service company HiSeis
- Perseverance Shear and multiple parallel structures observed to plumb directly into Hiltaba Intrusives
- New ~10km westbound extension of recently identified ML 6455 'Perseverance repeats' model

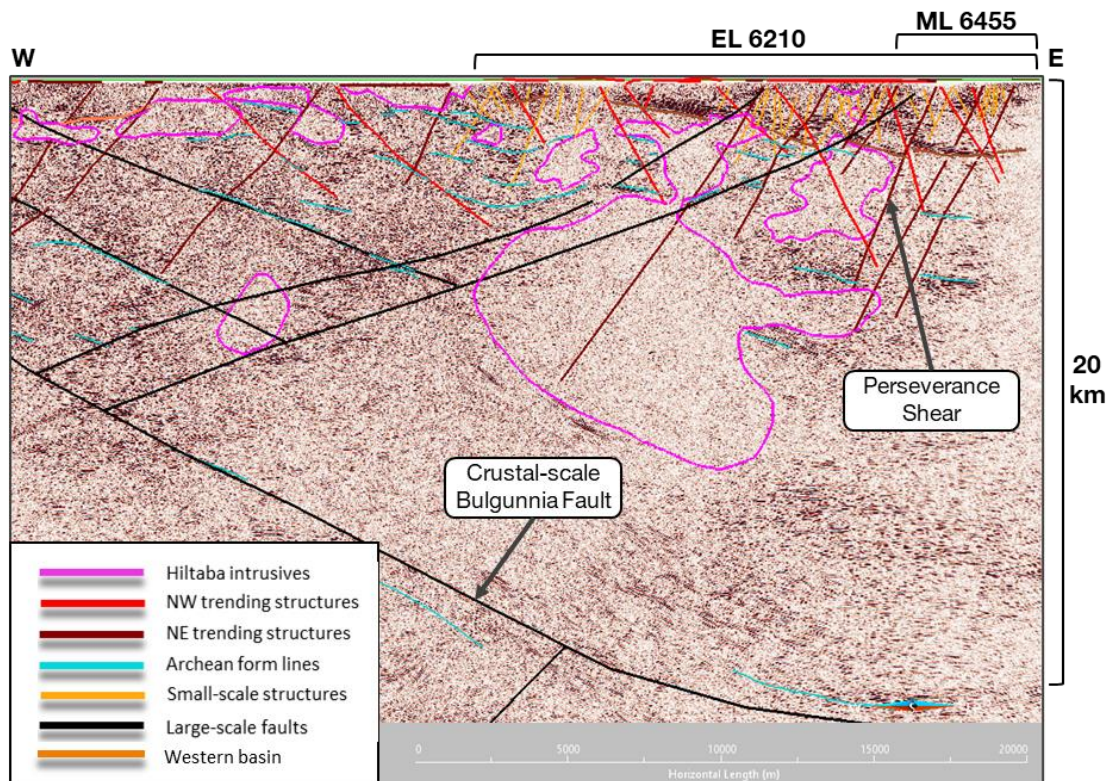
Identification of Major Fault System Connecting Parallel Shear Structures to Large-Scale Intrusives

Barton Gold Pty Ltd (**Barton** or the **Company**) is pleased to announce the completion of a 2D seismic analysis targeting the area underlying ML6455 and the high-grade Perseverance Open Pit Mine at the Tarcoola Project.

The analysis was undertaken by HiSeis, a leading international seismic services company that specialises in high-definition imaging of hard rock environments for improved exploration and development targeting.



Key objectives were to better understand the structural architecture underlying Tarcoola and identify the presence, dip and depth extents of the Perseverance Shear. The analysis included re-processing of ~54km of Geosciences Australia line 13GA-EG1 passing ~1km to the south of the existing Perseverance Open Pit Mine.

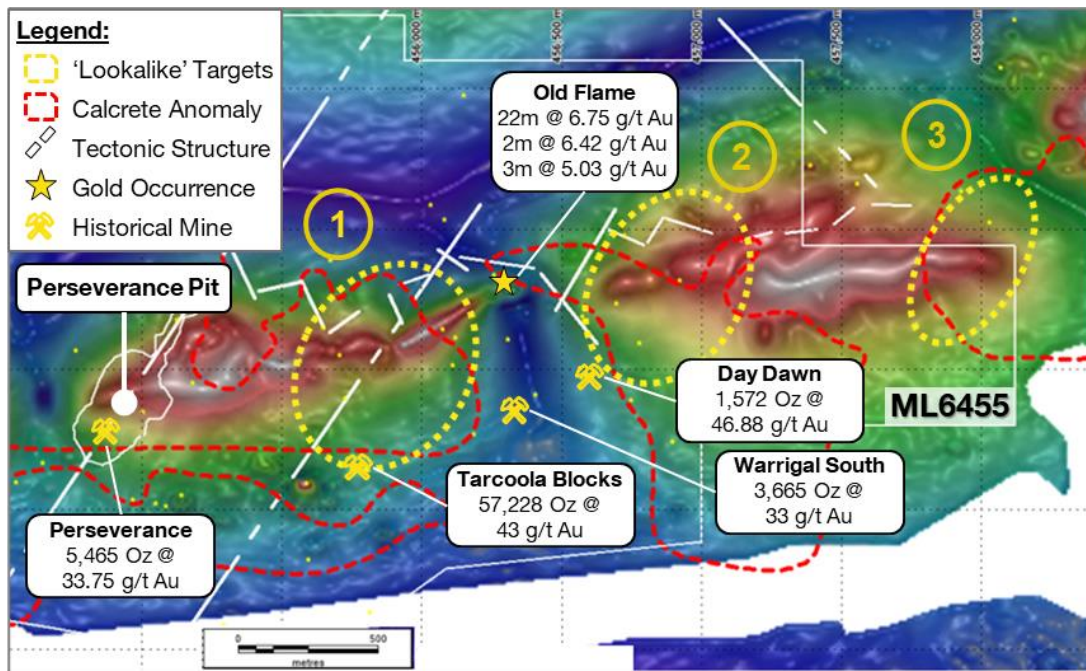


Reprocessed 2D Seismic Highlighting Crustal & Near-Surface Fault Systems

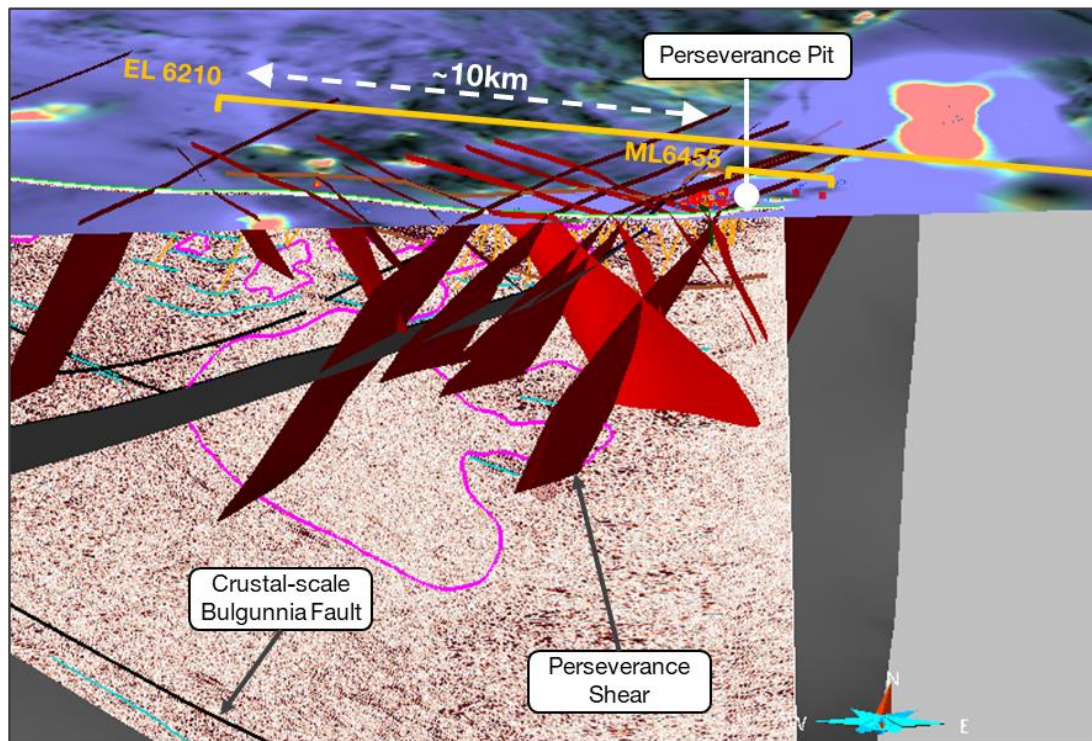
The reprocessed 2D seismic data clearly identified a crustal-scale fault ('Bulgunnia') connected to medium-scale fault structures at depth which meet small-scale faults near surface. **The medium and smaller-scale faults interact extensively with the Hiltaba Intrusives underlying the Tarcoola Project, including the high-grade Perseverance Shear which extends ~7km to depth flanking one Intrusive and directly intersecting another.**

New ~10 Kilometre Westbound Extension of ML 6455 'Perseverance Repeats' Model

The shallow structures interpreted in this seismic analysis correlate strongly to the results and interpretation of the Company's recently completed high-resolution geophysics analysis announced on 3 August 2020.



Tarcoola ML6455 –Filtered RTP Magnetics w/ Historical (early 1900s) Mines & New Targets



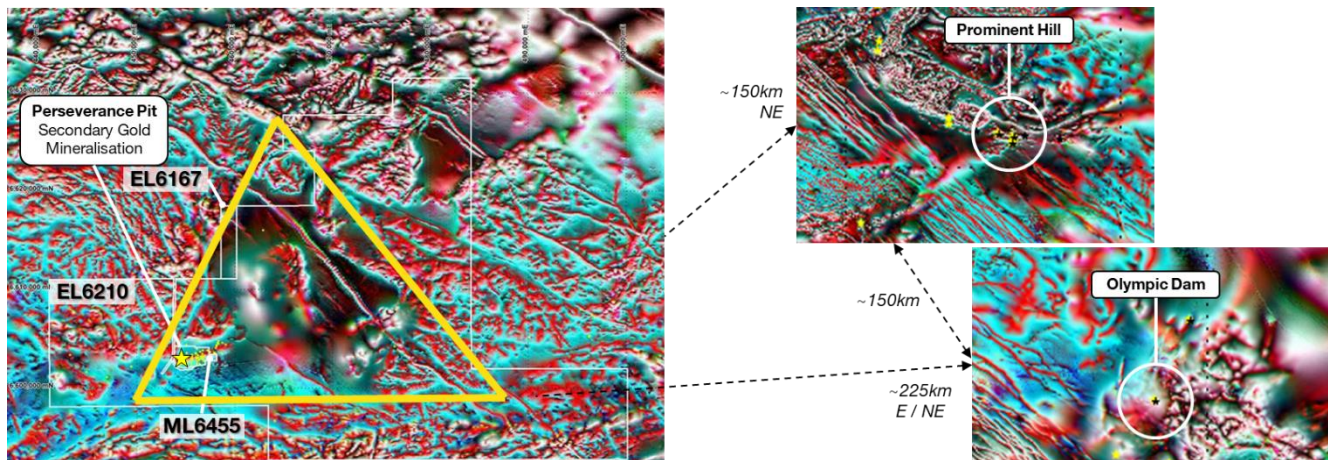
Interpreted 3D View of Local Structures Looking N/NW

Owing to the westbound direction of seismic line 13GA-EG1, the Company has also identified that multiple other parallel shears / faults appear to repeat the Perseverance Shear model. **Accordingly, these findings not only strengthen the potential for high-grade Perseverance Pit 'repeats' on ML 6455, but also extend this model ~10km to the west onto Barton's EL6210 where these parallel faults plumb into the same Hiltaba Intrusives.**

Thick Remnant Basin + Intrusives = Significant Mineralising Potential Under EL 6210

Tarcoola's physical location lies in a 'regional geological triangle' with Prominent Hill and Olympic Dam, and at the junction of major Gawler Craton regional structural features extending W/SW from each.

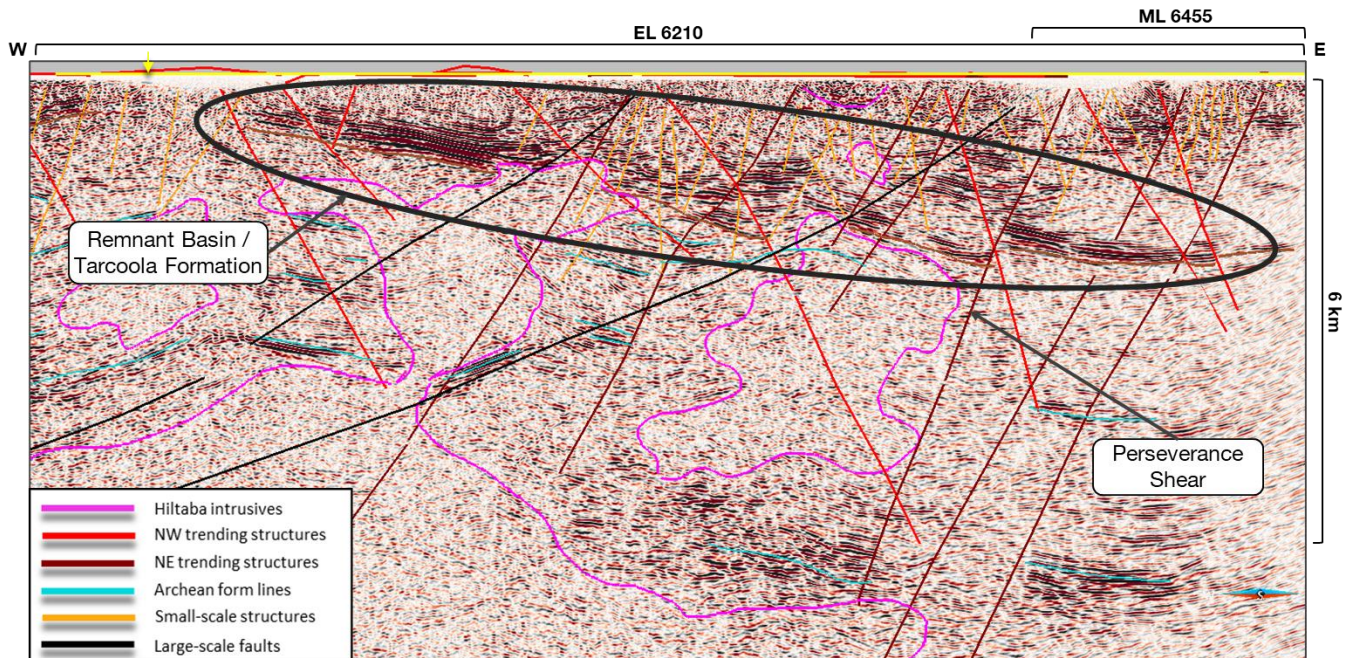
Further investigation of the seismic results also appears to confirm the Company's recent geophysical analysis that the domain underlying Tarcoola EL 6210 is remnant basin of a character distinct to the more highly disrupted surrounding areas, and potentially more akin to that at Oz Minerals' Prominent Hill Mine (~150km east of EL 6210) and BHP's Olympic Dam Operations (~225km E/NE of EL 6210).



Enhanced Residual RTP Showing Tarcoola Magnetic Domains & Structure

Together, these analyses may support the conclusion that the Tarcoola remnant basin model extends across the majority of EL 6210, and some +20km east from the terminus of the seismic line 13GA-EG1 / ML 6455.

Seismic imaging shows ~10km of interpreted remnant basin underlying the western margins of EL 6210, seen as thick layers of high reflectivity. Notably, this basin directly overlies and is in contact with the Hiltaba Intrusives.



Interpreted Remnant Tarcoola Basin in Dense Layers of High Seismic Reflectivity

The presence of large-scale heat sources (Hiltaba Intrusives) underlying thick basin rocks indicates significant mineralising potential where large fault structures pass through basin rock and plumb directly into the intrusives. This may also explain the proliferation of historical high-grade gold occurrences across ML 6455.

"We are pleased to be a part of Barton's exciting new approach to the Tarcoola Project and this region of the Gawler Craton. The results of this analysis are preliminary and ongoing, but the very high degree of reflectivity underlying EL 6210, in part due to the remnant basin, renders the Tarcoola Project very favourable to 3D seismic analysis. The additional sub-surface insights gained from 3D seismic have been successfully used to optimise exploration costs through enhanced direct targeting at several leading projects."

- Leigh Rigg, HiSeis CEO

"We are incredibly pleased to share these results, and we thank HiSeis for their excellent and extensive analysis. These findings strongly correlate with the results of our recently completed high-resolution geophysics analysis, and they are transformative to our understanding of the potential scale and gold prospectivity of the Tarcoola Project."

We have now confirmed the potential for significant depth extensions of the Perseverance Shear and Perseverance Pit, and the high potential of multiple adjacent structures which underlie ML6455 and EL 6210 and directly intersect the same intrusive heat sources.

This extends our target area for repeats of high-grade shallow mineralisation, and deeper feeder structures, to almost 14km in length and firmly establishes Tarcoola as a large-scale, highly-prospective project long since waiting for its true potential to be confirmed."

- Alexander Scanlon, Managing Director

For and on behalf of the Board

Alexander Scanlon
Managing Director

For further information, please contact:

Alexander Scanlon
Managing Director
a.scanlon@bartongold.com.au
+61 425 226 649

Neil Rose
Director
n.rose@bartongold.com.au
+61 419 614 783

Allister Blyth
Company Secretary
a.blyth@bartongold.com.au
+61 438 300 966

ABOUT BARTON GOLD:

Barton Gold Pty Ltd is a privately held Australian gold acquisition and development company with a primary focus on low-capital-cost developments and optimisations of existing mines and processing infrastructure. Current projects include the restart of South Australia's high-grade Perseverance open pit gold mine at the Company's Tarcoola Project, and the subsequent development of the Tunkillia Gold Project. Tunkillia is South Australia's largest undeveloped gold-only Resource.

The Company's leadership and team include experienced natural resources investment and development professionals, and the Company's technical and execution capability are strengthened through its technical alliances with Australia's leading mine geology, mine engineering, and contract operations teams.

www.bartongold.com.au

IMPORTANT NOTICES:

Disclaimer

This document has been prepared by Barton Gold Pty Ltd and/or its affiliates (together, "Barton") for the exclusive use of the party to whom Barton delivers this document (the "Recipient"). The information contained in this document has been prepared in good faith by Barton. However, no representation or warranty, either express or implied, is made as to the accuracy, completeness, adequacy or reliability of the information contained in this document. This document contains only a synopsis of more detailed information in relation to the matters described herein and accordingly no reliance may be placed for any purpose whatsoever on the sufficiency or completeness of such information as presented herein. This document should not be regarded by the Recipient as a substitute for the exercise of its own judgment and the Recipient should conduct its own due diligence in respect of the contents of this document. To the maximum extent permitted by law Barton, its directors, officers, employees, advisers, and agents disclaim any or all liability for any loss or damage which may be suffered by any person as a result of the use of, or reliance upon, anything contained within or omitted from this document.

This document has been prepared solely for informational purposes. This document does not constitute a prospectus and is not to be construed as a solicitation or an offer to buy or sell any securities, or related financial instruments, in any jurisdiction. The Recipient should not construe the contents of this document as legal, tax, accounting or investment advice or a recommendation. The Recipient should consult its own legal counsel, tax and financial advisors concerning any matter described herein. This document does not purport to be all-inclusive or to contain all of the information that the Recipient may require. No investment, divestment or other financial decisions or actions should be based solely on the information in this document. The distribution of this document may be restricted by law in certain jurisdictions. The Recipient and any other persons who come into possession of the document must inform themselves about, and observe, any such restrictions.

Cautionary Statement Regarding Values & Forward-Looking Information

The figures, valuations, forecasts, estimates, opinions and projections contained herein involve elements of subjective judgment and analysis and assumption. Barton does not accept any liability in relation to any such matters, or to inform the Recipient of any matter arising or coming to the company's notice after the date of this document which may affect any matter referred to herein. Any opinions expressed in this material are subject to change without notice, including as a result of using different assumptions and criteria. This document may contain forward-looking statements. Forward-looking statements are often, but not always, identified by the use of words such as "seek", "anticipate", "believe", "plan", "expect", and "intend" and statements that an event or result "may", "will", "should", "could", or "might" occur or be achieved and other similar expressions. Forward-looking information is subject to business, legal and economic risks and uncertainties and other factors that could cause actual results to differ materially from those contained in forward-looking statements. Such factors include, among other things, risks relating to property interests, the global economic climate, commodity prices, sovereign and legal risks, and environmental risks. Forward-looking statements are based upon estimates and opinions at the date the statements are made. Barton undertakes no obligation to update these forward-looking statements for events or circumstances that occur subsequent to such dates or to update or keep current any of the information contained herein. The Recipient should not place undue reliance upon forward-looking statements. Any estimates or projections as to events that may occur in the future (including projections of revenue, expense, net income and performance) are based upon the best judgment of Barton from information available as of the date of this document. There is no guarantee that any of these estimates or projections will be achieved. Actual results will vary from the projections and such variations may be material. Nothing contained herein is, or shall be relied upon as, a promise or representation as to the past or future. Barton, its affiliates, directors, employees and/or agents expressly disclaim any and all liability relating or resulting from the use of all or any part of this document or any of the information contained herein.

This material must not be copied, reproduced, distributed or passed to others at any time, in whole or in part, without the prior written consent of Barton.